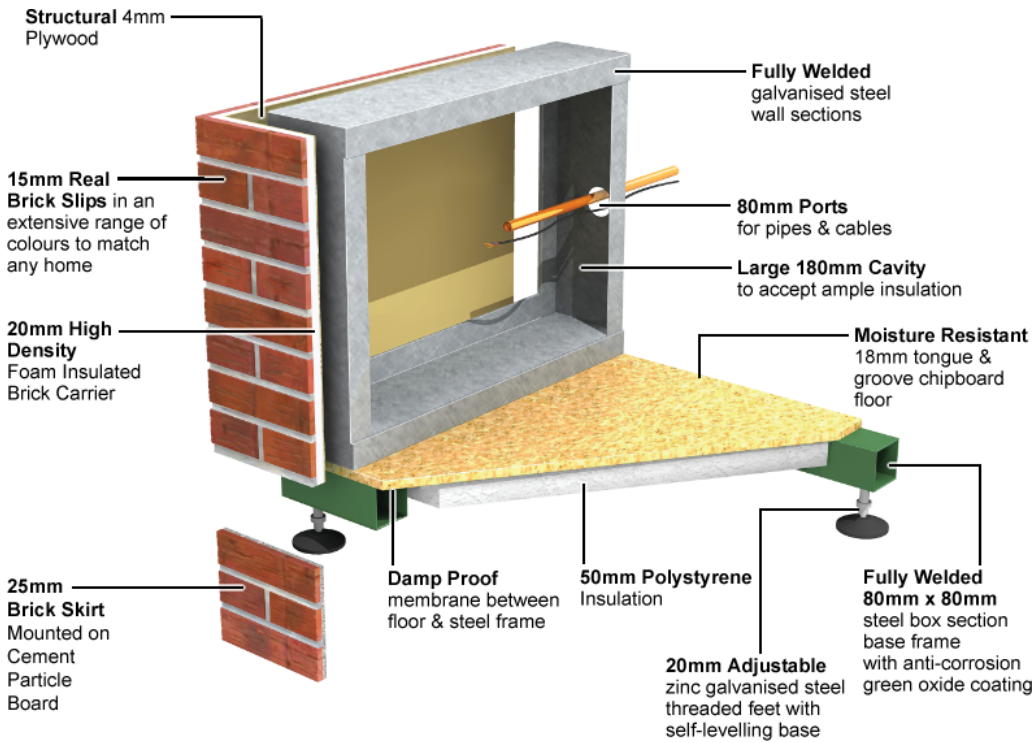
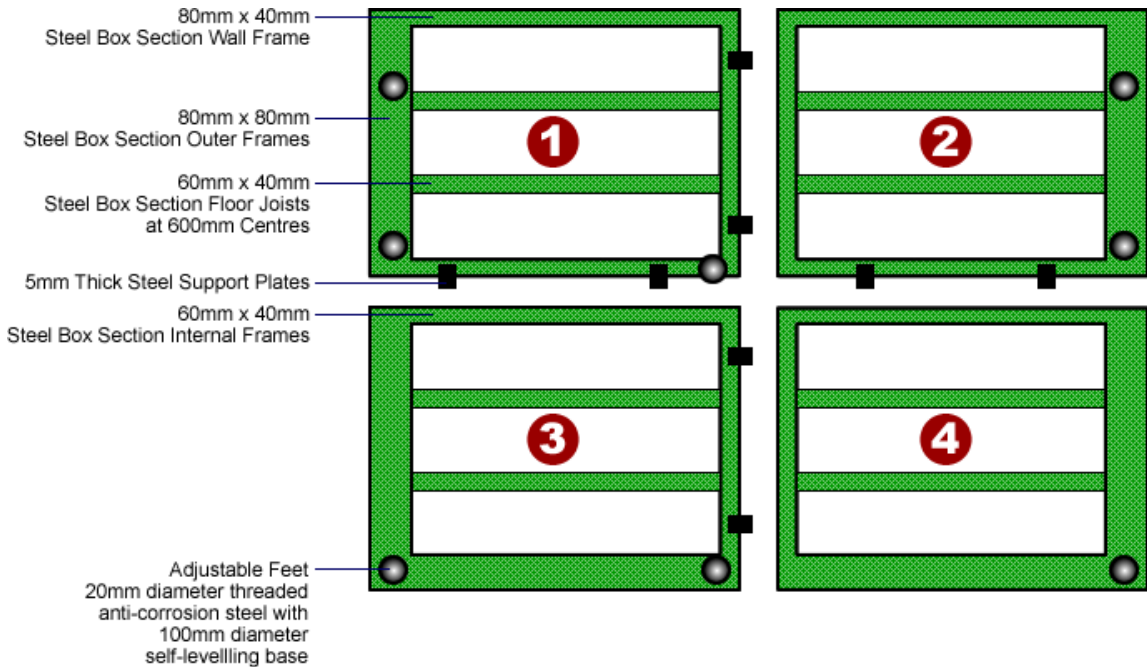


## Technical Specifications



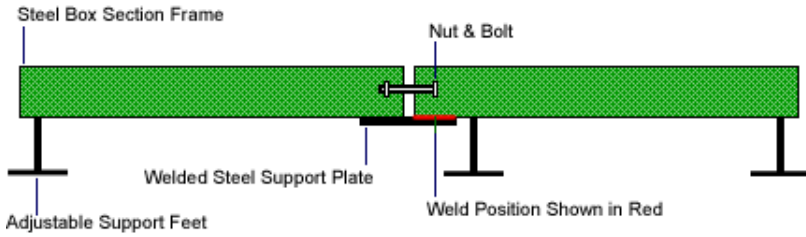
## Viewed from Beneath

All sections are factory assembled, fully welded and coated with Anti-Corrosion Green Oxide  
**Sections are installed in the numbered sequence shown**

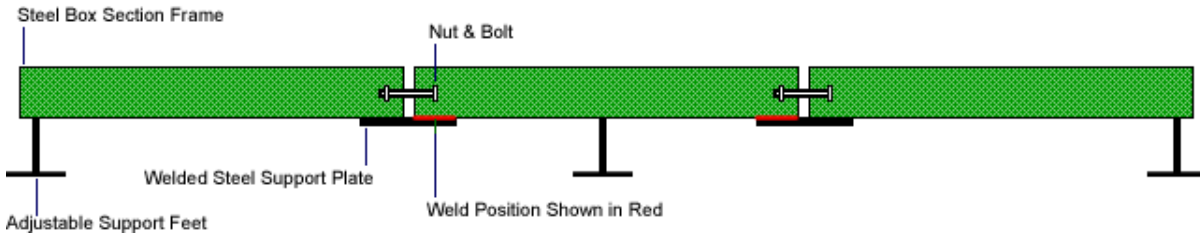


# Section Joint Detail

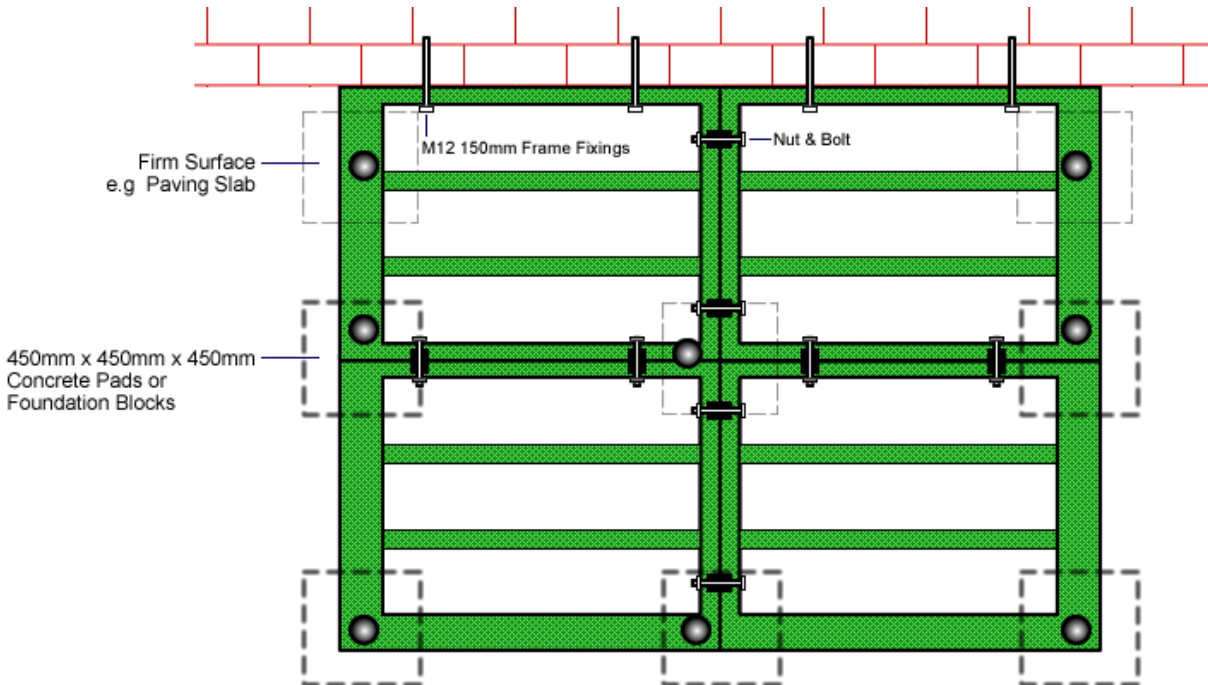
## 2-Section Joint



## 3-Section Joint



# ConservaBase Installed



# Supplied

- All sections shown above
- Adjustable Feet
- 50mm Polystyrene Insulation (**9mm Decking Ply + 75mm Polystyrene for Scottish Building Regulations**)
- 18mm Moisture-Resistant Chipboard Floor Boards (**22mm for Scottish Building Regulations**)
- Brick Skirt / PVCu Fascia in Colour to Match Property / Conservatory
- Damp Proof Membrane
- All Fixings
- Assembly Instructions
- 25 Year Anti-Corrosion & Structural Guarantee